



*We  
Made,  
Baked,  
and  
Grew it  
for you.*

**Media Kit**

*Old*  
**STRATHCONA**  
FARMERS' MARKET





## Our History

The Old Strathcona Farmers' Market is a year-round market that has been a staple event of the Old Strathcona area since 1983. Housed in a predominant building in the historic neighbourhood of Old Strathcona, the OSFM was Edmonton's first indoor farmers' market and currently has over 130 vendors every Saturday providing an assortment of handmade goods, locally grown produce, specialty food, crafts, art and more.



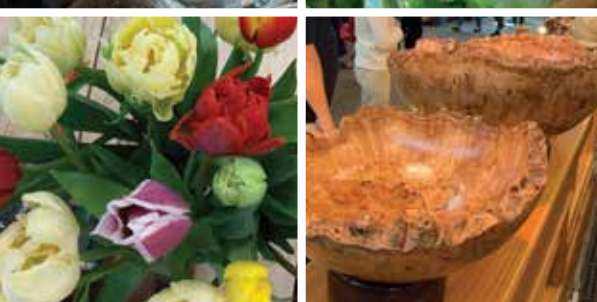
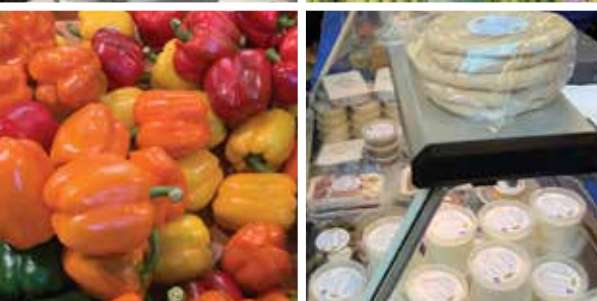
## Our Overview

### Market Dates & Times

We are Edmonton's original indoor, year-round farmers' market, open every Saturday from 8am to 3pm. We offer 275 stalls of free parking for customers during market hours in our parking lot across Gateway Boulevard.



For media inquiries, contact our office:  
780-439-1844 / [office@osfm.ca](mailto:office@osfm.ca)



# Our Vendors

We have over 130 vendors every Saturday selling only locally grown produce, specialty foods and handmade arts and crafts.

## Verified Vendors

Our vendors have been carefully screened to ensure their products are authentically produced by them—and nobody else. The result? Confidence in knowing anything you buy was made, grown or handcrafted by the vendor you bought it from.



For media inquiries, contact our office:  
780-439-1844 / office@osfm.ca





# Our Community

## Shopping Local

There are many great reasons to shop local, and farmers' markets give customers an opportunity to access the freshest foods at the height of their season.

People love to shop at our market for the community atmosphere, the healthy food choices and the fact that they get to meet the person who grew their food or made their craft with their own hands.

## Our Customers

We have many regular customers who come every single week to visit their favourite vendors, as well as tourists and first timers.

We try to make customers part of the family: many customers who shopped here as kids with their parents are now walking the aisles with baby strollers in tow!



For media inquiries, contact our office:  
780-439-1844 / [office@osfm.ca](mailto:office@osfm.ca)





For more information please contact:

**Donna Lohstraeter, Chief Executive Officer**

780-439-1844 / [office@osfm.ca](mailto:office@osfm.ca)

10310 83 Ave NW, Edmonton, AB T6E 5C3

*Old*  
**STRATHCONA**  
FARMERS' MARKET